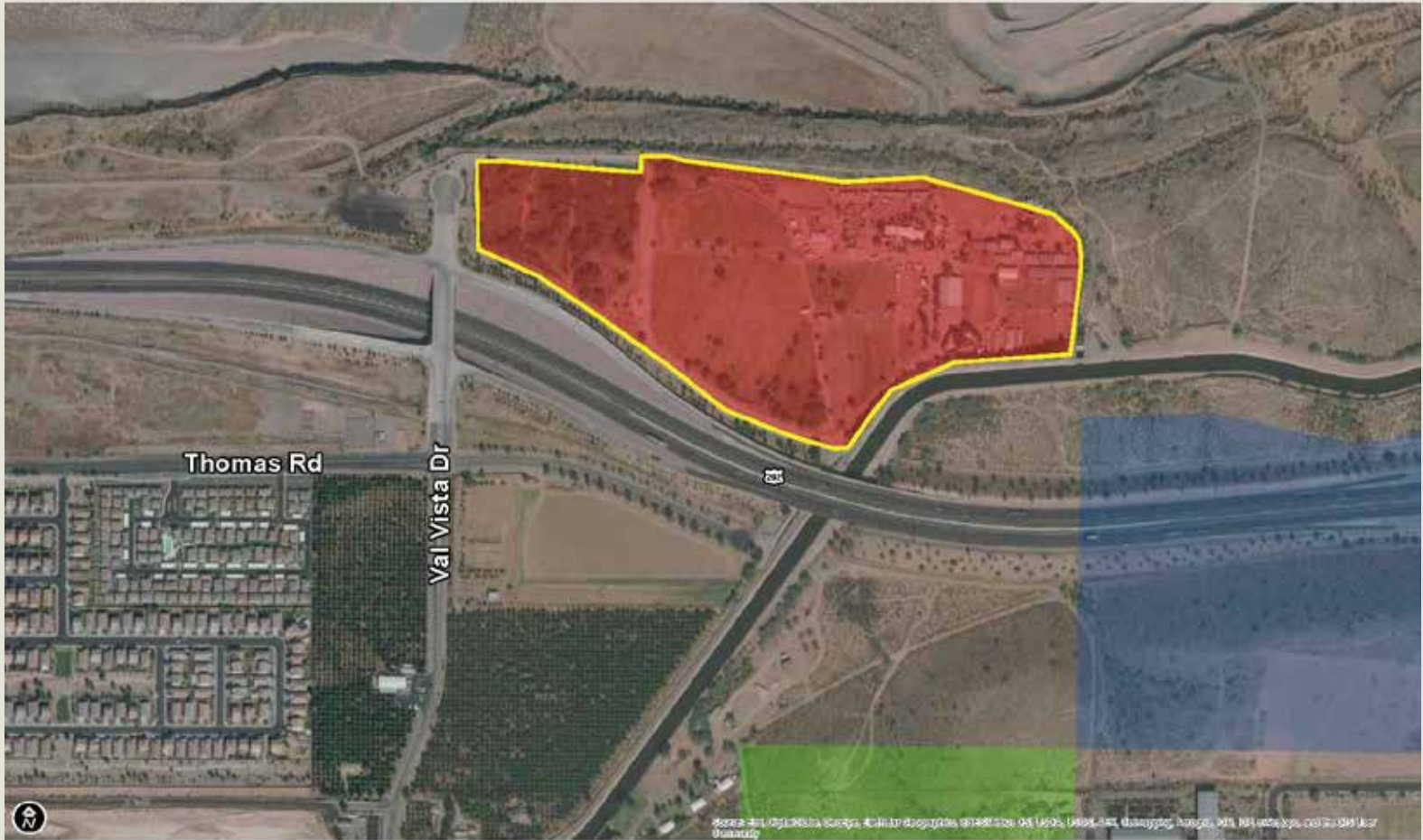


WESTLAND PROPERTIES GROUP CLOSES RESIDENTIAL INFILL TRANSACTION

December 22, 2021 – Reserve 100, LLC (Blandford Homes) purchased the ±41 **Tyler Ranch at Pioneer Crossing** site located at the Northeast corner of Loop 202 & Val Vista Dr, Mesa, Arizona. The site is planned as a gated community with 160 Lots | 3.9 DUA as follows: 68 Lots | 45' x 120', 63 Lots | 50' x 112' & 29 Lots | 60' x 130'. The purchase price was \$18,000,000 | \$112,500/Platted & Engineered Lot. The Seller in this transaction was the Donald & Wanda Tyler Family LP. Grant D. Helgeson and Don McCaul of the Westland Properties Group represented the Buyer in this transaction.



TYLER RANCH AT PIONEER CROSSING
LOOP 202 & VAL VISTA DR
MESA, ARIZONA

Grant D Helgeson, Broker - Direct: (480) 675-5149

Don McCaul, Broker - Direct: (480) 675-5144

WPG WESTLAND PROPERTIES GROUP
8141 E Indian Bend Rd, Ste 103 Scottsdale AZ 85250
Tel: (480) 443-8570 / Fax: (480) 443-3736
www.westland-properties.com



Grant D. Helgeson



Don McCaul