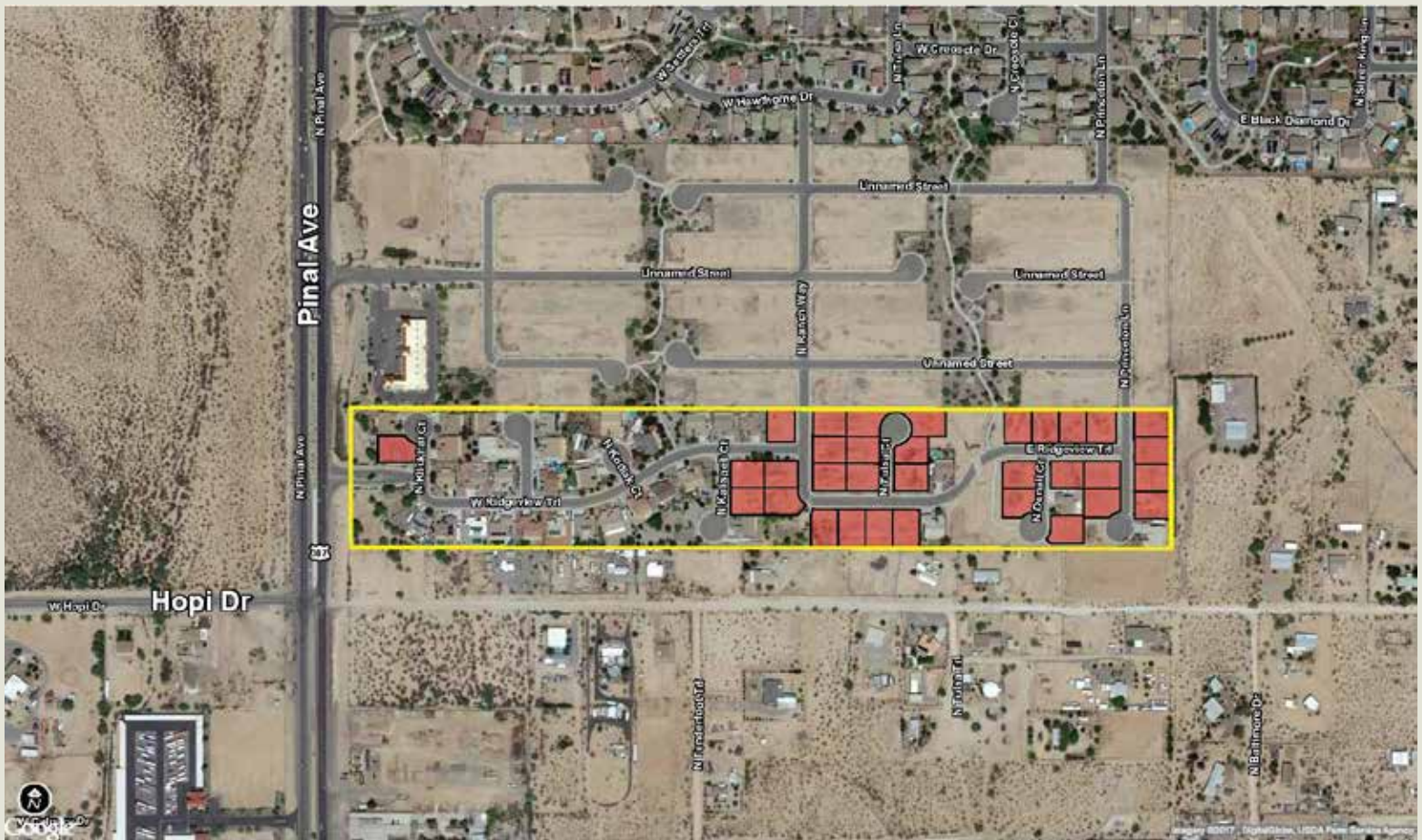


WESTLAND PROPERTIES GROUP CLOSES ANOTHER DEVELOPED LOT TRANSACTION

November 16, 2017 – Palo Duro Homes, LLC purchased 33 Developed Lots | 85' x 105' within the **Countrywalk Estates** subdivision, located on Hwy 387 / Pinal Ave & Hopi Dr, Casa Grande, Arizona. The cash purchase price was \$792,000 | \$24,000/Developed Lot. The Seller in this transaction was Landsmith Appreciation Fund, LLC. Grant D. Helgeson and Don McCaul of the Westland Properties Group represented both parties in this transaction.



COUNTRYWALK ESTATES
33 DEVELOPED LOTS | 85' x 105'
HWY 387/PINAL AVE & HOPI DR
CASA GRANDE, ARIZONA

Grant D Helgeson, Designated Broker - Direct: (480) 675-5149

Don McCaul, Broker - Direct: (480) 675-5144

WPG | WESTLAND PROPERTIES GROUP
8141 E Indian Bend Rd, Ste 103 Scottsdale AZ 85250
Tel: (480) 443-8570 / Fax: (480) 443-3736
www.westland-properties.com



Grant D. Helgeson



Don McCaul