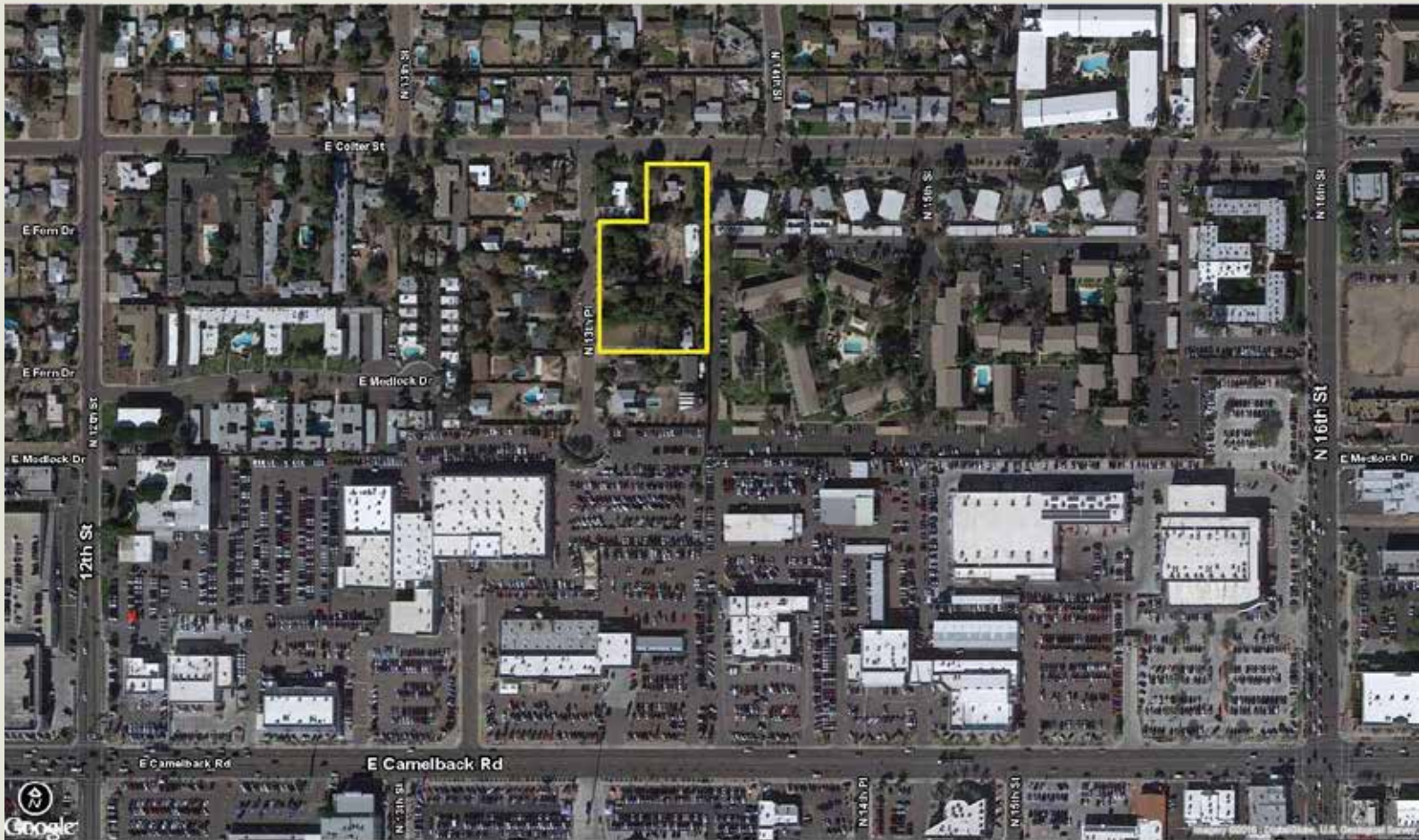


WESTLAND PROPERTIES GROUP CLOSES ANOTHER INFILL TRANSACTION

August 4, 2017 – Atlanta based homebuilder LGP Enterprises, Inc., purchased a ±2.11 Acre residential infill site located at 13th Pl & Colter Rd, Phoenix. The cash purchase price was \$2,000,000 | \$64,516/Planned Lot (31 Lot portion of entire site). This transaction represents the first purchase in a ±2.98 Gross Acre site - tentatively called **Colter Place** - that will total 51 Single Family Row Townhome Lots | 20' x 40'. The Seller was 13th Place SF, LLC. Grant D. Helgeson and Don McCaul of the Westland Properties Group represented the Seller in this transaction.



COLTER PLACE
±2.11 ACRES | PLANNED FOR 23 LOTS
16th ST & CAMELBACK RD AREA
PHOENIX, ARIZONA

Grant D Helgeson, Designated Broker - Direct: (480) 675-5149

Don McCaul, Broker - Direct: (480) 675-5144

WPG | WESTLAND PROPERTIES GROUP
8141 E Indian Bend Rd, Ste 103 Scottsdale AZ 85250
Tel: (480) 443-8570 / Fax: (480) 443-3736
www.westland-properties.com



Grant D. Helgeson



Don McCaul